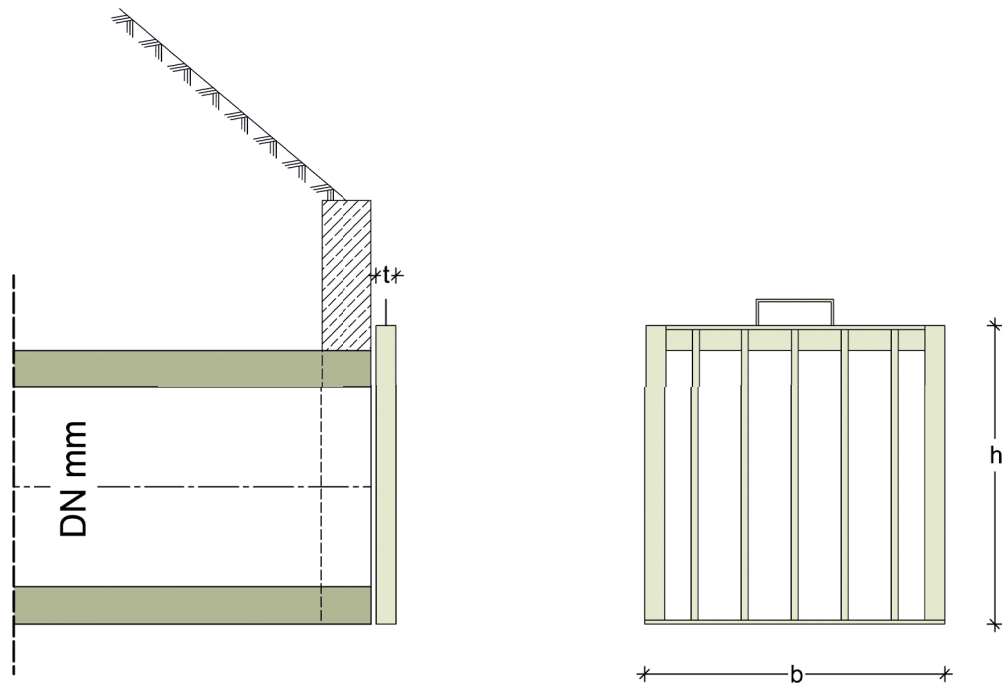


Produktzeichnung FG



Abmessungen

| Rohr DN | lichter Stababstand | Breite b | Höhe h | Tiefe t |
|---------|---------------------|----------|--------|---------|
| 300 | 70 | 350 | 350 | 40 mm |
| 400 | 75 | 460 | 460 | 40 mm |
| 500 | 80 | 560 | 560 | 40 mm |
| 600 | 85 | 670 | 670 | 40 mm |
| 700 | 90 | 790 | 790 | 50 mm |
| 800 | 100 | 900 | 900 | 50 mm |